

RODENT **Fix** XR1

METAL VR BAIT STATION FOR RATS

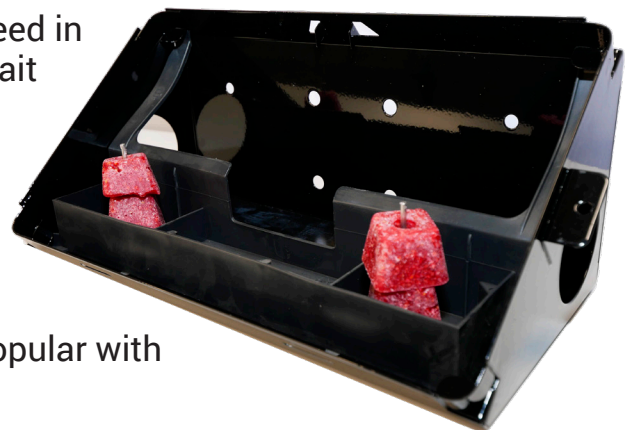


The ultimate vandal resistant rodent bait station.
Powder coated galvanised steel for incredible durability and weather resistance.

Shaped with a rounded top to encourage rodents to feed in comfort within the bait station, therefore increasing bait uptake.

Pliable and easily removeable bait tray can be changed for a snap tray for securing break back traps.

It's sleek design and easy servicing makes the XR1 popular with both pest controllers and their serviced clients.

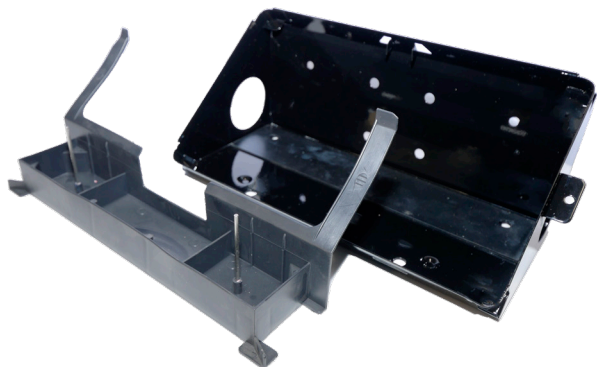


www.pestfix.co.uk
sales@pestfix.co.uk
+44(0)1903 538488

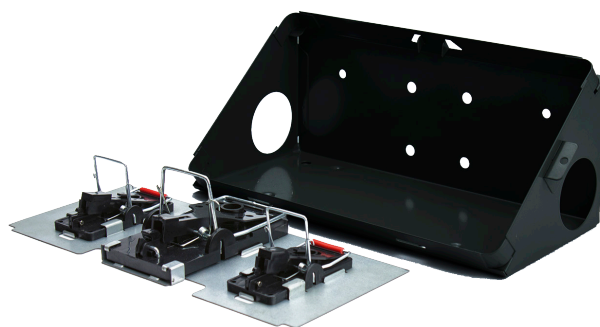
Units 1-3 Cedar Park,
30 Terminus Road, Chichester,
West Sussex, PO19 8GT

RODENT **Fix** XR1

METAL VR BAIT STATION FOR RATS



Bait tray for all formulations



Optional break back trap securing plate

Technical Specifications

- Material : Two protective layers: powder coated and galvanized steel
- Finishing : Round lid, unit without inner or outer sharp edges
- Thickness material (mm) : 1.0
- Opening : Front opening mechanism
- Colour : Black
- Name & warning : Silk screened on the lid in mono colour
- Bait chamber inlay part Inner : 2 separate, water free, bait chambers, ABS injection molded : Separate black section plastic inlay with two bait chambers is included
- *optional extra : A metal snapper plate, which can hold: 3x mice snapper or, 1x rat + 2x mice snapper in a locked position. This replaces the rodenticide inlay.
- Entrance mat : Black rubber strip eliminates the threshold barrier caused by the cold Steel
- Corrosion protection : Class 0 acc. neutral salt spray tests (acc. norm ASTM B117 / 500 hrs)
- Coating adhesive strength : Class 0 acc. condense test (acc. norm BS3900 F2 / 500 hrs.)
- Coating layer thickness (micron) : min.: 50 / max. : 70 (average min.: 60)
- Drainage holes : 2
- Guarantee : 2 year on mechanical aspects
- Dimensions (L x W x H) : 370 x 170 x 160 mm
- CE-approved : Yes
- Weight (kg) : 2.1
- Lock : Safety lock on front of the bait station for safe access, frost proof
- Additional lock possibility : Bait station can be locked with a padlock (not in scope of supply)
- Key : 2 keys included per 4 bait stations
- Packing : Packed per unit in a cardboard casing
- Mounting position : Floor mounting or wall mounting (wall mounting drill holes)



www.pestfix.co.uk
sales@pestfix.co.uk
+44(0)1903 538488

Units 1-3 Cedar Park,
30 Terminus Road, Chichester,
West Sussex, PO19 8GT